

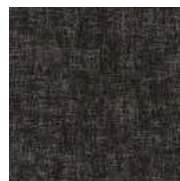
43

PATTERN

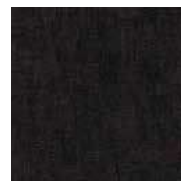
151



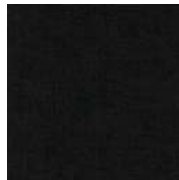
LRV 11 L 40 957



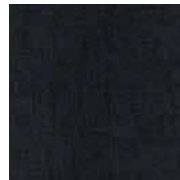
LRV 7 L 31 610



LRV 4 L 22 830



LRV 3 L 18 965



LRV 4 L 23 592

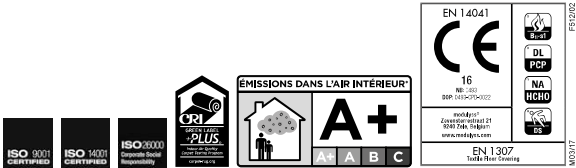
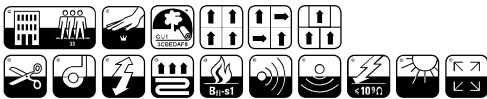


LRV 5 L 25 351

PATTERN

152 Technical datasheet

CONSTRUCTION	Tufted 1/10" Loop, printed	FIRE RESISTANCE	EN 13501-1 B _{fl} -s1
PILE MATERIAL	100% PA 6 IMPREL	FASTNESS TO LIGHT	ISO 105-B02 ≥ 5-6
SECONDARY BACKING	Back2Back: Modified bitumen enhanced with a thermoplastic elastomer, reinforced with a glass fibre fleece covered with 100% PES fleece, 10% recycled content included	RUBBING FASTNESS	EN ISO 105-X12 ≥ 4
TOTAL WEIGHT	Ca. 4 400 g/m²	COLOUR FASTNESS TO WATER	EN ISO 105-E01 ≥ 4
PILE WEIGHT	Ca. 605 g/m²	THERMAL RESISTANCE	ISO 8302 0,063 m² K/W
PILE ABOVE BACKING	Ca. 372 g/m²	IMPACT NOISE RATING	ISO 10140 ΔL _w : 32 dB (1 000 Hz) ΔL _w : 23 dB
TOTAL HEIGHT	Ca. 6,6 mm	SOUND ABSORPTION	ISO 354 α _w : 0,15 Hz 125 250 500 1000 2000 4000 α _s 0,00 0,00 0,06 0,15 0,28 0,31
PILE HEIGHT	Ca. 3,1 mm	PERMANENT ANTISTATIC	ISO 6356 ≤ 2 kV
PILE DENSITY	Ca. 0,120 g/cm³	TRANSVERSAL RESISTANCE	ISO/DIS 10965 ≤ 1 x 10⁴ Ohm
TUFT DENSITY	Ca. 218 000 /m²	SIZE & PACKING	50 cm x 50 cm box: 5 m² pallet: 20 boxes
CLASSIFICATION	EN 1307 33 - LC1	NUMBER OF COLOURS	6, Special colours possible
CASTOR CHAIR SUITABILITY	EN 985 A: continuous use	DIMENSIONAL STABILITY	EN 986 Max. 0,2%
DONNÉES ENVIRONNEMENTALES	Démarche HQE [®] : cf. FDES suivant NF P01-010 Déclaration du 30/07/2003	GUT-NR	3CBEDAF8
		LEED [®]	Product contributes toward satisfying Credits under LEED [®] . For more information, see the modulys sustainable datasheets.



Sustainable datasheet

1. RECYCLED CONTENT

- 49% Overall recycled content.
- Yarn**
100% PA 6 IMPREL.
- Secondary Backing – back2back**
The waste from the tile cutting process is shredded and added to the secondary backing, giving it a 10% post-industrial recycled content.
- Recycled limestone in the backing**
The filler used for the production of our carpet tiles is 100% post-industrial recycled, diverted from a waste stream of the limestone mining.

2. MANUFACTURING

- Renewable energy**
49% of our energy consumption is electricity. The electricity that we use at modulyss is 100% 'green electricity' generated from renewable resources such as our own solar panels.
- Production site & process**
modulyss runs an integrated production chain: from tufting to the packaging of the finished tile.
ISO certification
Our production site is ISO-9001 certified (Quality Management) since 2000 and ISO-14001 certified (Environmental Management) since 2009, modulyss also works in accordance with ISO26000 and publishes a Corporate Social Responsibility report in line with the guidelines of the Global Reporting Initiative (GRI), the international standard for sustainability reporting, and the UN's Sustainable Development Goals (SDGs).
Recycling raw yarns
All the left over and waste yarns are collected and recycled into new yarns.
Ecological Packaging
We only use cardboard boxes that are made of 100% recycled material.
- Sustainability report**
Read all about our approach to the environment in our sustainability report 2016: <http://www.modulyss.com/ebook/mvo/>.

3. INSTALLATION

- Adhesive**
modulyss® advises to use a solvent-free, easy release system with very low emissions.
- Installation waste**
In a rectangular building, installed before walls, using our installation descriptions the waste for carpet tiles is 3-4%. In comparison for broadloom the waste during installation rises to ± 10%. More information can be found in our installation instructions.

4. END OF LIFE

- Re-use**
At the end of life, after cleaning, carpet tiles can be re-used in non-critical areas, to extend the product life.
- Recycling**
Carpet tiles can be used as raw material for the backing of new carpet tiles in our back2back program.
- CARE**
Partnership modulyss®/Vanheede Environment Group in which carpet tiles are converted into secondary fuel to reduce CO₂ emissions significantly. The minerals are extracted from the carpet tiles and recycled into raw material for the cement production industry, which results in ± 50% recycling of our carpet tiles.

5. VOC'S & CHEMICAL SUBSTANCES

This product fulfills the testing criteria for emissions of:

- DIBT (DE)**
Deutsche Institute für Bautechnik
TVOC28<1.0 mg/m³
This product is DIBT-certified, Abz-number Z-156,601-604.
- CRI (US and international)**
Carpet & Rug Institute
Compliant to the requirements of Green Label Plus, GLP 1101 (see LEED®, point 7.b).
- GUT (DE)**
Gemeinschaft Umweltfreundlicher Teppichboden
TVOC28<100 µg/m³
This product meets the GUT-criteria, GUT-license number 3CBEDAF8. These criteria include VOC thresholds, odour and chemical substances.
- REACH (EU)**
modulyss® complies with the strict European REACH standards.
- Sundahus (SE)**
Sundahus Miljödata is a system of health and environmental assessment of products in the construction and real estate businesses. The core of the system is a database of substances, materials and products, B-rating.
- M1 (FI)**
This certificate is granted by the Building Information Foundation RTS sr. The aim of the classification is to enhance the development and the use of low-emitting building materials to create a healthy indoor environment.

6. ENVIRONMENTAL PRODUCT DECLARATION (EPD)

An EPD is a standardised way to provide information on the environmental impact of a product during the entire life. They include information on the environmental impact of raw material extraction and production, energy use and efficiency, content of materials and chemical substances, emissions to air, soil and water and waste generation. A product-specific EPD in accordance with the ISO14025 and EN15804, is available for this product. The EPD-declaration-number is EPD-MOD-20170095-CBC1-EN.

7. COMPLIANCE TO GREEN BUILDING CERTIFICATIONS

- BRE Global (UK)**
Building Research Establishment.
This product can contribute towards credits in:
Hea 02 – Indoor Air Quality
To recognise and encourage a healthy internal environment through the specification and installation of appropriate ventilation, equipment and finishes.
■ Use of a low-emission adhesive on installation (BN EN 13996-1:2007) can contribute to this credit.
■ modulyss® carpet tiles meet the requirements of EN14041, including E1 classification for formaldehyde emissions, and can contribute to the credit for healthy internal air quality.
Hea 05 – Acoustic performance
To ensure the buildings' acoustic performance including sound insulation meet the appropriate standards for its purpose, this product is highly sound-absorbent. It reduces contact noise by 23 decibels (ΔL_v – ISO 10140) and has an absorption coefficient of 0.15 (ISO 354).
MAT 1 – Life Cycle Impact
BREEAM Rating Offices
Certificate ENP 428 all A-rating – Eco point score 0.315.
To recognise and encourage the use of construction materials with a low environmental impact (including embodied carbon) over the full life cycle of the building. For more information on the Green Guide to Specification visit www.brs.co.uk/greenguide or www.greenbooklive.com.
MAT 4 – Designing for Robustness
To recognise and encourage adequate protection of exposed elements of the building and landscape, therefore minimising the frequency of replacement and maximising materials optimisation. This product satisfies the requirements of EN1307 classification, class 33 - LC1 for intensive use in a contract environment.
WST 01 – Construction Waste Management
To promote resource efficiency via the effective management and reduction of construction waste. This product can contribute to waste reduction on site. See item 3, installation, for more details. Concerns cutting waste on installation of carpet tiles.

b. LEED® (US and international)

Leadership in Energy and Environmental Design modulyss products can contribute to the following LEED® v4 credits:

- MR credit: Interiors Life-Cycle Impact Reduction.**
MR credit: Building product disclosure and optimisation - Environmental Product Declarations.
MR credit: Building product disclosure and optimization - Sourcing of raw materials.
MR4 Post-Industrial recycled content: 49%.
MR4 Post-Consumer recycled content: 0%.
MR credit: Construction and demolition waste management.
EQ credit: Low emitting materials.
EQ credit: Indoor air quality assessment.
EQ credit: Acoustic performance.

Products are not reviewed under LEED®. LEED® credit requirements cover the performance of materials in aggregate, not the performance of individual products of brands. For more information on LEED®, visit www.usgbc.org/contact.

c. HQE (FR)

Haute Qualité Environnementale
In 2005 modulyss® was awarded the HQE certificate by FDES in accordance with NF P01 010. This product can contribute to eight of the 13 HQE targets as follows:

Eco-Construction	MOQUETTES FDES
Integrated choice of products and construction materials	T2
Low site nuisance	T3
Comfort	MOQUETTES FDES
Hygrothermal comfort	T8
Acoustic comfort	T9
Visual comfort	T10
No unpleasant smells	T11
Health	MOQUETTES FDES
Sanitary quality of areas	T12
Sanitary air quality	T13

d. Good Environmental Choice Australia (GECA) (AU)

Australia's only independent, not-for-profit, multi-sector ecolabelling program. Certification program that assesses and certifies products and services that have a lower impact on the environment and human health and address important social considerations.

8. HEALTH & COMFORT

- Solvent-free Bitume**
For the bitumebacking we only use bitumen that is not oxidised and is solvent-free.
- No heavy metals**
modulyss® carpet tiles are free of heavy metals and other harmful substances, such as lead, mercury or chromium.
- Odour**
modulyss® carpet tiles are free from odours (see GUT certification program).
- Acoustics**
This product is strongly sound absorbent. It reduces the contact noise by 23 decibels (ΔL_v – ISO 10140), with a perfect acoustic effect as result.